

STD-3300

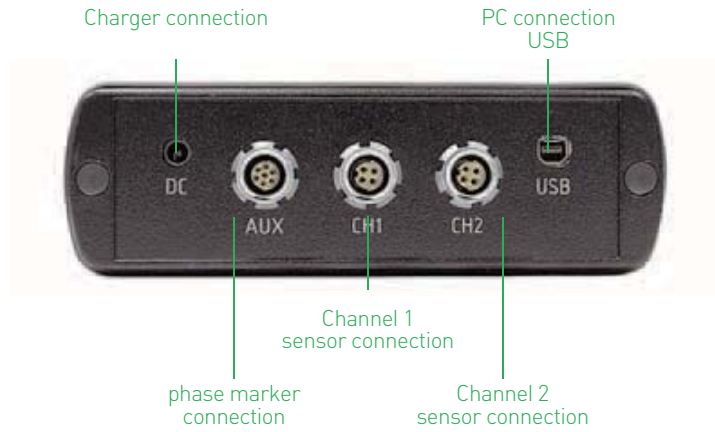
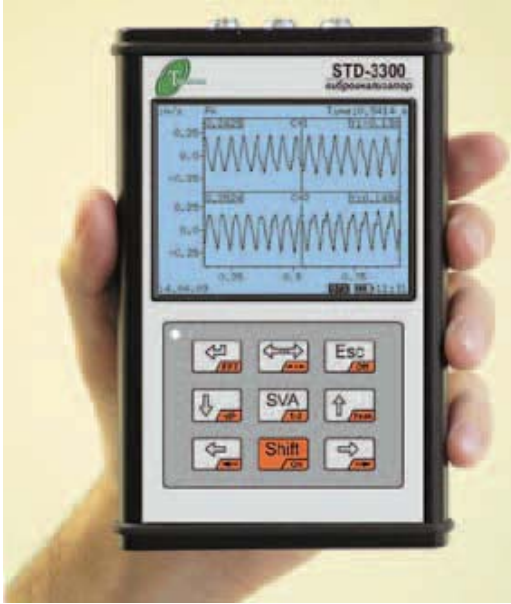
Vibration Data Analyzer

THE CHOICE OF PROFESSIONALS: ULTIMATE FUNCTIONALITY AND RELIABILITY

STD-3300 is a powerful two-channel vibration analyzer that makes it possible to collect and analyze synchronous two-channel data. Impressive diagnostics features and balancing function make this analyzer a key tool for detecting machinery faults.

- Autodetection of sensor type and parameters. Work with any ICP sensors, proximitors, etc.
- Warning and Alarm thresholds
- Complete data analysis on-site (waveforms, spectrum, filtration, orbits, etc.)
- Long signals collection and further analysis
- Run Up/Coast Down
- Real-time analysis
- 1 or 2 plane Balancing
- Free firmware updating
- Full compatible with the Vibrodesigner-Standard analysis software
- STD-3300 can be connected to on-line condition monitoring systems





Compact and light-weighted. Easy and intuitive one-hand operation, lightweight design – STD-3300 is an ideal instrument for machinery inspection.

Clear display. High-contrast backlighting display (320x240 pixels) enables working at any lighting conditions: from the shining sun to darkness.

Automatic sensor type identification. When a sensors are connected, analyzer automatically detects sensor type for each channel. No mix up of sensors.

Routes. Uploading comprehensive data into the PC with the Vibrodesigner-Standard for further in-depth analysis.

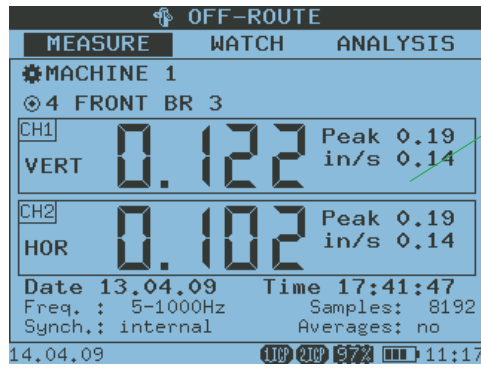
Thresholds. You can set warning/alarms thresholds of interest.

Long-lived operation. Due to adjustable auto shutdwn feature, the STD-3300 may work for a long time without recharge. The battery indication is always on the screen.

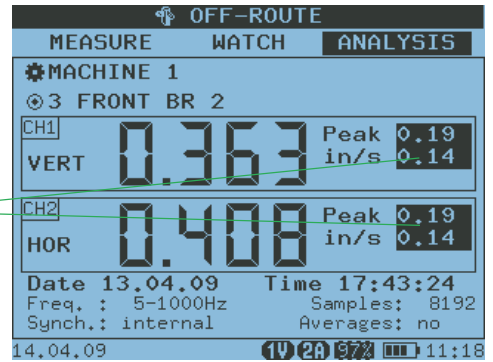
Large memory. The STD-3300 can store a large bulk of data in up to 2GB permanent memory. Available memory is displayed on the screen during operation.

Various operational approaches. Possible to equip with additional mesurement functions by entering a license key (no firmware updates are required).





Warning/alarm thresholds not exceeded

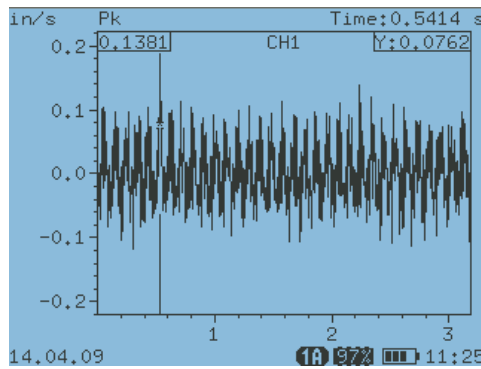


Warning/alarm thresholds exceeded

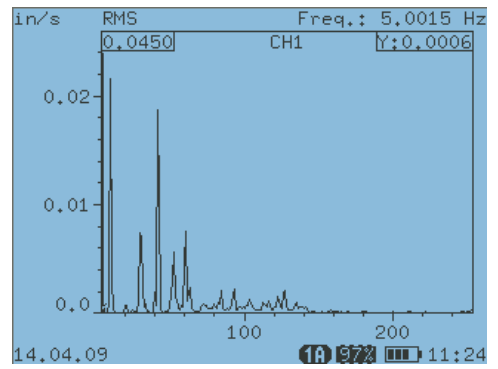
ROUTES MODE

Easy data collection, as well as storage, classification and in-depth analysis of route and off-route data.

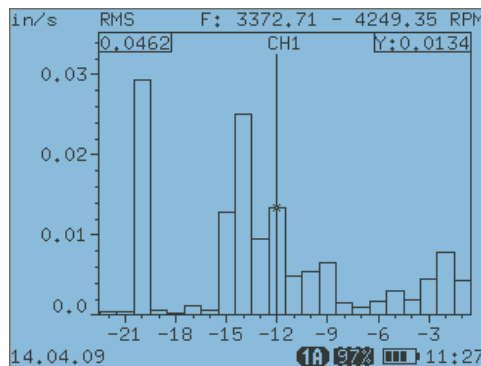
Time waveforms, spectrums, integration and differentiation, zooming and filtering, orbits and many other features are available in order to exactly estimate machinery condition and its trends.



Waveform collecting with filtering

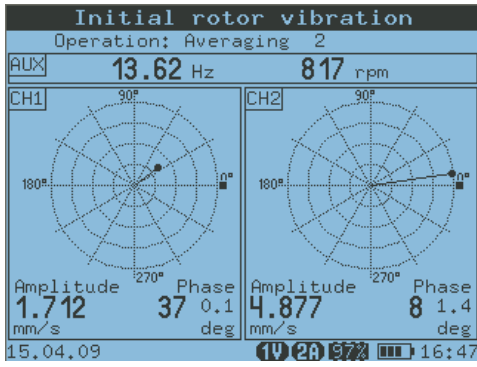


RMS spectrum (25600 lines resolution)
(Visible region RMS, in-band value, etc.)

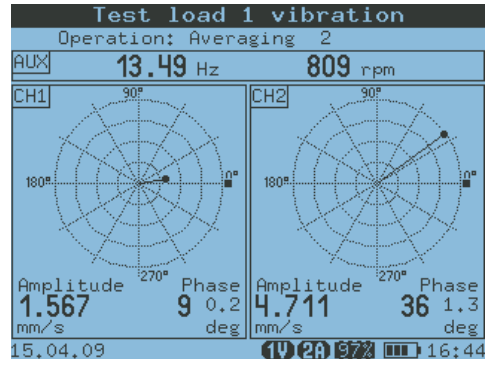


1/3 or 1 octave spectrum –
display in-band RMS and so on.

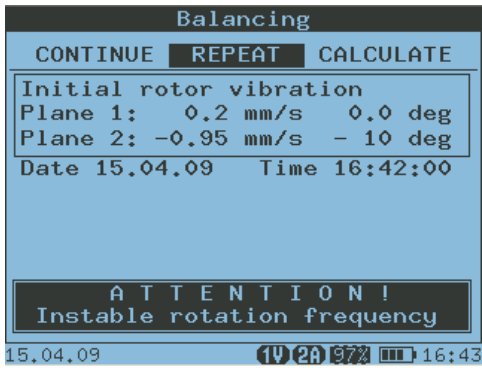




Balancing: Initial rotor vibration



Balancing: Vibration with 1st test mass



Balancing: Report

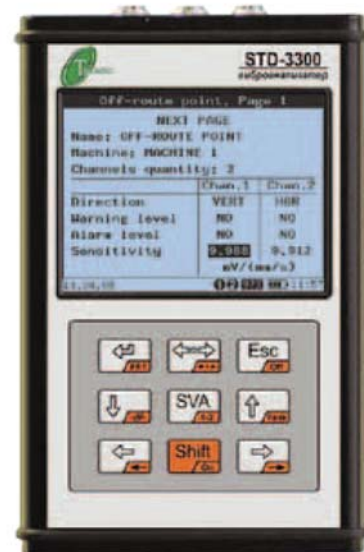
BALANCING MODE

An intuitive menu provides you with quick and high-quality one- or two-plane balancing in on-site bearings. The analyzer demonstrates an imbalance degree and balancing results.

AUTODETECTION OF SENSOR TYPE AND PARAMETERS



Autodetection of sensor type and reading sensitivity, phase characteristic and gain factor



MEASURE MODE

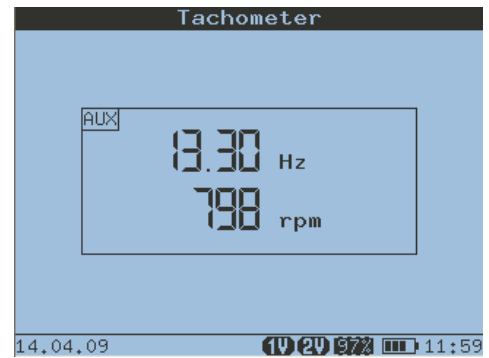
A set of measurement and analysis options enable you to use the STD-3300 to monitor machinery conditions in various modes, to estimate speed characteristics, and locate defects and faults. In this mode, you can use the STD-3300 as a laboratory tool.

Tachometer – measure rotor speed

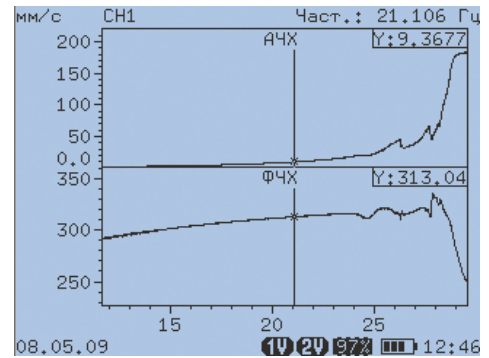
Tacho+vibro – displaying fundamental frequencies vectors with vibration value and phase in real time

Long waveform – acquisition and further in-depth analysis of long time waveforms (up to 6 mln sampling)

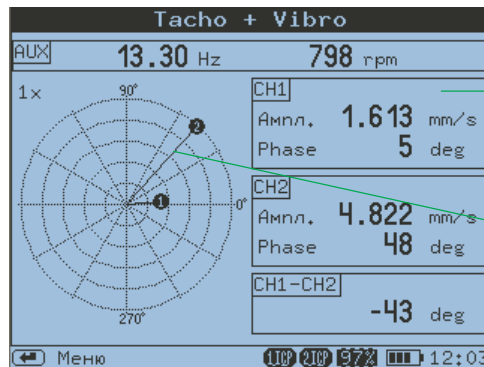
Run-up/Coast-down – high-resolution acquisition and analysis Run-up/Coast-down data to estimate resonances in a machine



Tachometer mode



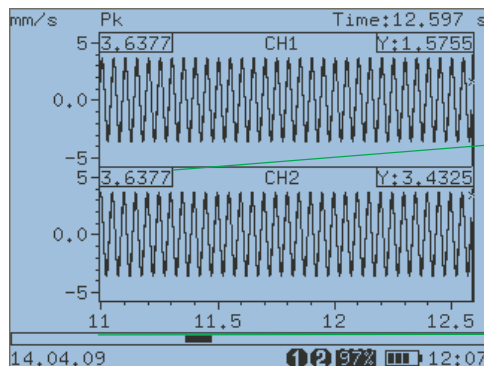
Run-up/Coast-down mode



Tacho+vibro mode

1st fundamental freq. Peak and phase (1st channel)

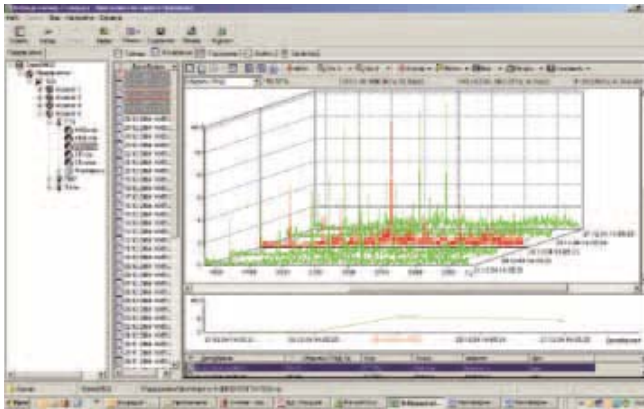
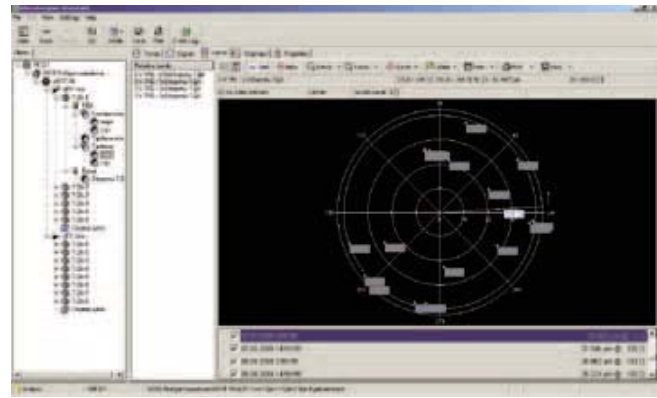
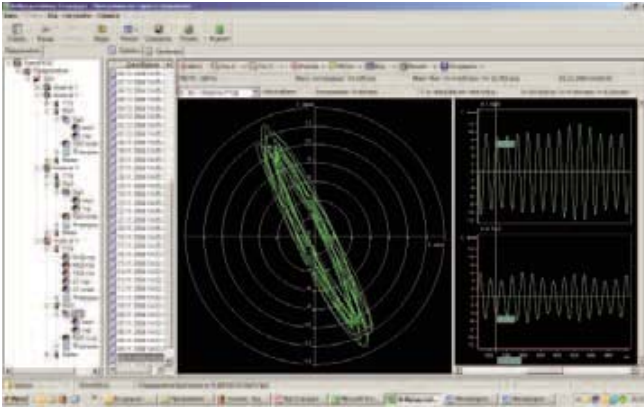
1st fundamental freq. vector (2nd channel)



Long waveform mode

Maximum peak

Screen position view



VIBRODESIGNER ANALYSIS SOFTWARE

Fully compatible with the Vibrodesigner Analysis software that allows you to monitor machinery condition, archive data, create reports, etc. The data collected with STD-3300 can be then analyzed to prevent catastrophic machine failure, unplanned production downtime and optimization of shop maintenance. For more information on analysis features, refer to the Vibrodesigner-Standard section.

ACCESSORIES

Various accessories allow you to expand STD-3300 functionality

- CH-BNC-24 - adaptor to connect STD-3300 to BNC output of on-line monitoring systems, transmitters, drivers etc.
- AUX-BNC - adaptor to connect STD-3300 to BNC output of stationary key phasor
- portabile Palm Strobe
- Impact hammer
- Current Clamp
- and other



DELIVERY SET

A convenient carrying shake-proof case



MEASUREMENT

Measurement channels	2 analog inputs, 1 tachometer input
Sensor type	VP-9, VP-11, ICP, Charge output, connection to on-line monitoring systems tachometer - optical, laser, proximity switch, connection to stationary key phasor
Measurement parameters	RMS, Peak, Peak-to-Peak, time waveform, spectrum of acceleration, velocity, displacement, envelope waveform, envelope spectrum, orbits, Run-up/Coast-down, Real time measurement Route and Off-route acquisition
Frequency range	Fmin: 0 ... Fmax Hz Fmax: 500 ... 32 kHz
Measurement range (VP-9, RMS)	Displacement: 0 ... 10 mm Velocity: 0 ... 100 mm/s Acceleration: 0 ... 500 m/s ²
Spectrum resolution	3200, 6400, 12800, 25600 lines
Sampling	8192, 16384, 32768, 65536 points Averaging: 0 ... 256 Averaging type: linear
Threshold (per each channel)	2
Memory	Flash: 256 MB (option 2 GB) RAM: 32 MB
ADC	2x24 bits Dynamic range: up to 109 dB Sample rate: up to 82 kHz
Accuracy	±1%
Balancing:	Shaft speed: 10 ... 60 000 RPM Measurement types: acceleration, velocity, displacement Number of balancing plane: 1 or 2

DISPLAY

Type	graphic LCD, monochrome, with backlight
Size	320x240 px, 77x58 mm

PC CONNECTION

USB

POWER SUPPLY

Type	Ni-MH, rechargeable
Operating during	up to 18 hours
Charging during	up to 8 hours

ENVIRONMENT

Case protection	IP54
temperature	-20 ... +50 C
Humidity	90%

SIZE

170 x 110 x 35 mm (6,6 x 4,3 x 1,4 in)

WEIGHT

0,700 kg (1,54 ft)

